



# San Diego Agricultural Planning Program

Policy Focus

Water Availability & Efficiency



# Introduction

## **Sustainable Agricultural Lands Conservation (SALC) Program**

- Component of the California Strategic Growth Council's Affordable Housing and Sustainable Communities Program

## **Funded by California Climate Investments**

- Cap-and-trade auction proceeds for projects that reduce greenhouse gas emissions

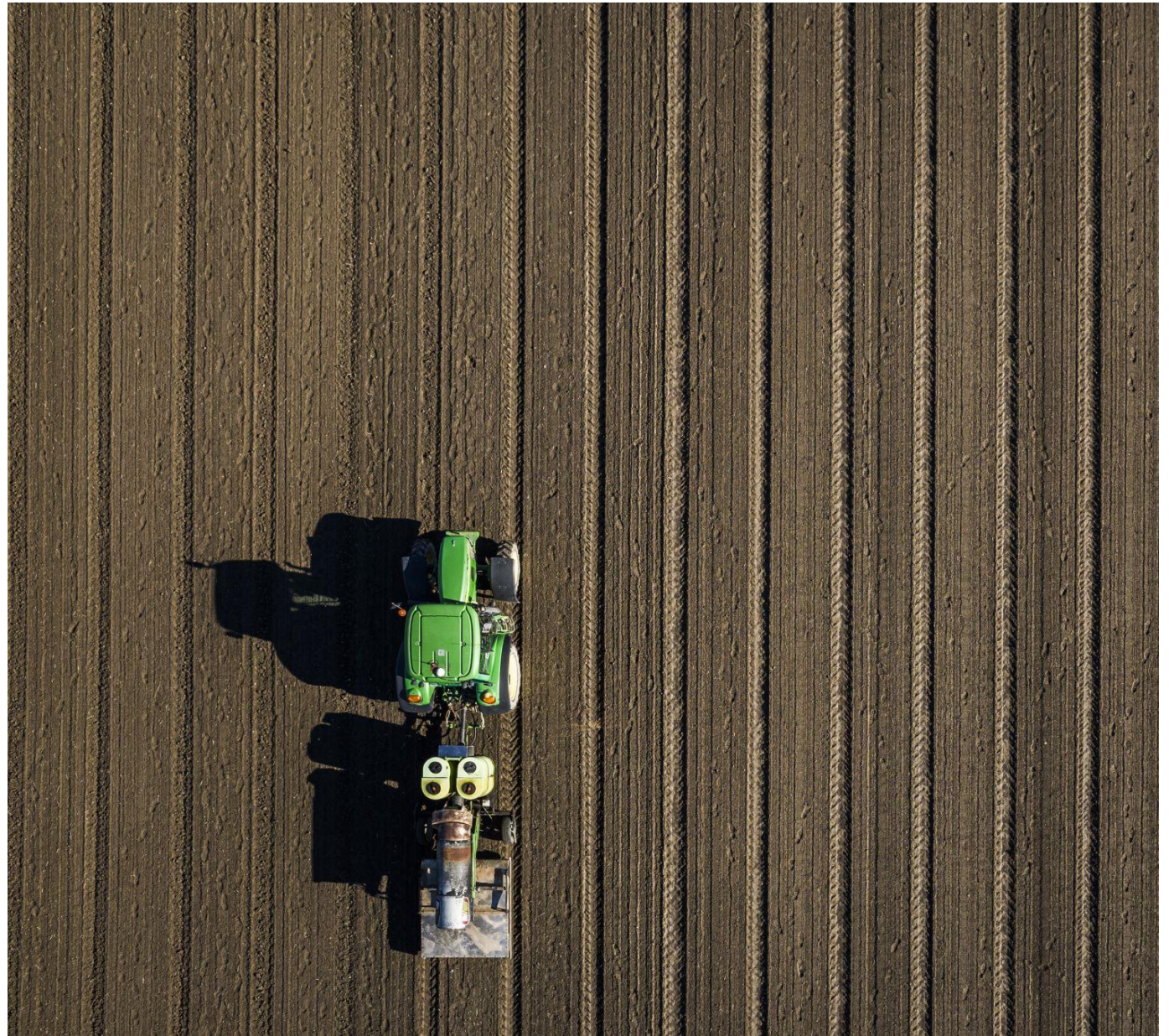


# Introduction

## Sustainable Agricultural Lands Conservation (SALC) Program

- Principal Goals
  - Protect at-risk agricultural lands
  - Avoiding increases in greenhouse gas emissions

Designated for funding either agricultural conservation acquisitions or agricultural conservation planning projects




---

# San Diego Agricultural Planning Program

---

- San Diego County LAFCO as Lead Applicant
- The RCD of Greater San Diego County as Project Manager
- Awarded \$250,000 Ag Conservation Planning Grant
- June 2021 – June 2023





# San Diego Agricultural Planning Program

---

## Key Partnerships:

- Mission RCD
- SDSU
- Foodshed
- Community Health Improvement Partners (CHIP)
- Dudek

## Key Tasks:

- Grant Management
- Mapping and GHG Analysis
- **Leveraging Programs, Projects, and Policies**
- Community Outreach
- Final Strategic Vision Plan

# Agenda

**9:00 – 9:15** | Partner Introductions  
- Establish Community Agreements -

**9:15 – 9:30** | Outreach Phase Results

**9:30 – 10:15** | Existing Program Summaries

**10:15 – 12:00** | Discussion of Project Proposals



# Policy Phase

*Is there an existing program addressing this need?*

*Can our core partners begin to address this need in the next year?*

## Priority Policy Topics

- Water Availability
- Labor Availability and Quality
- Land Costs and Access

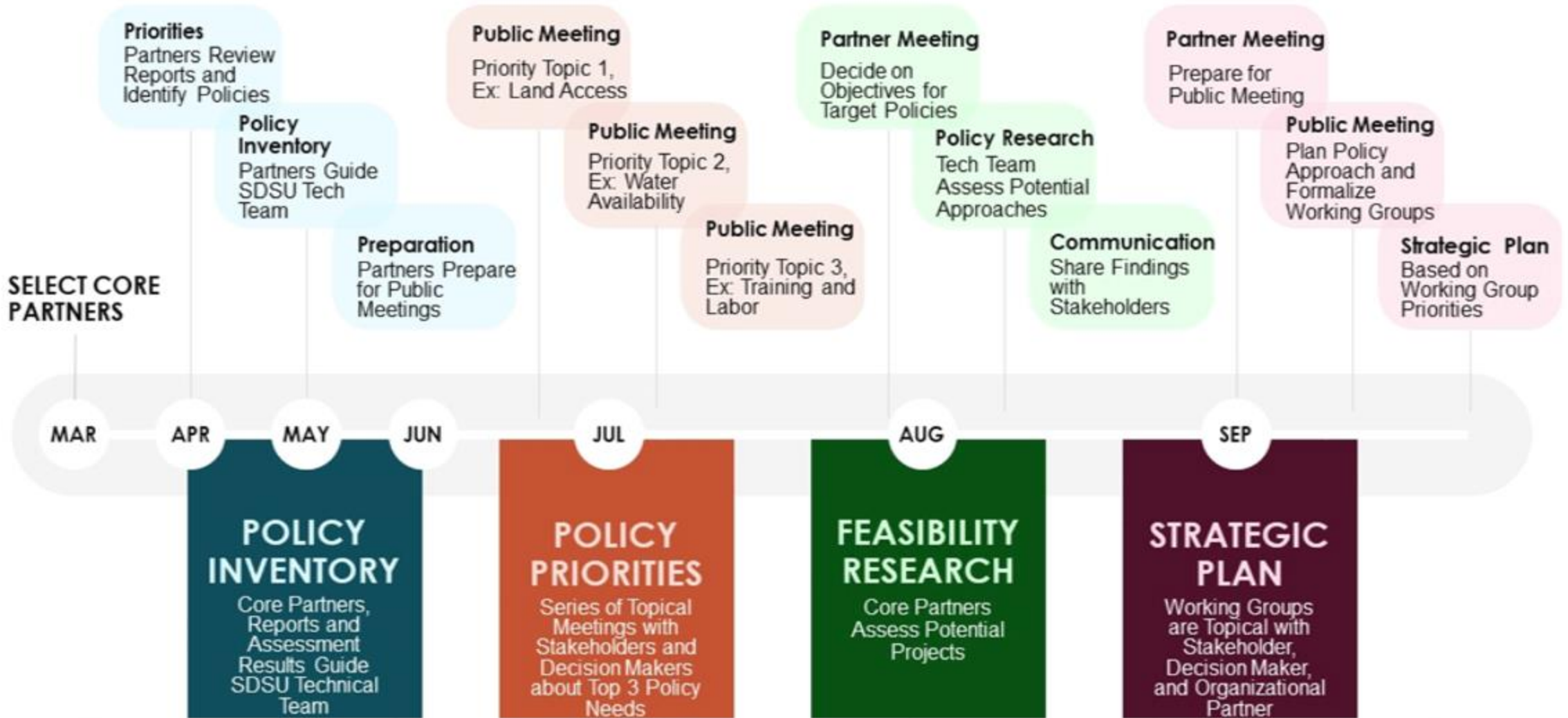




San Diego  
Agricultural  
Planning  
Program

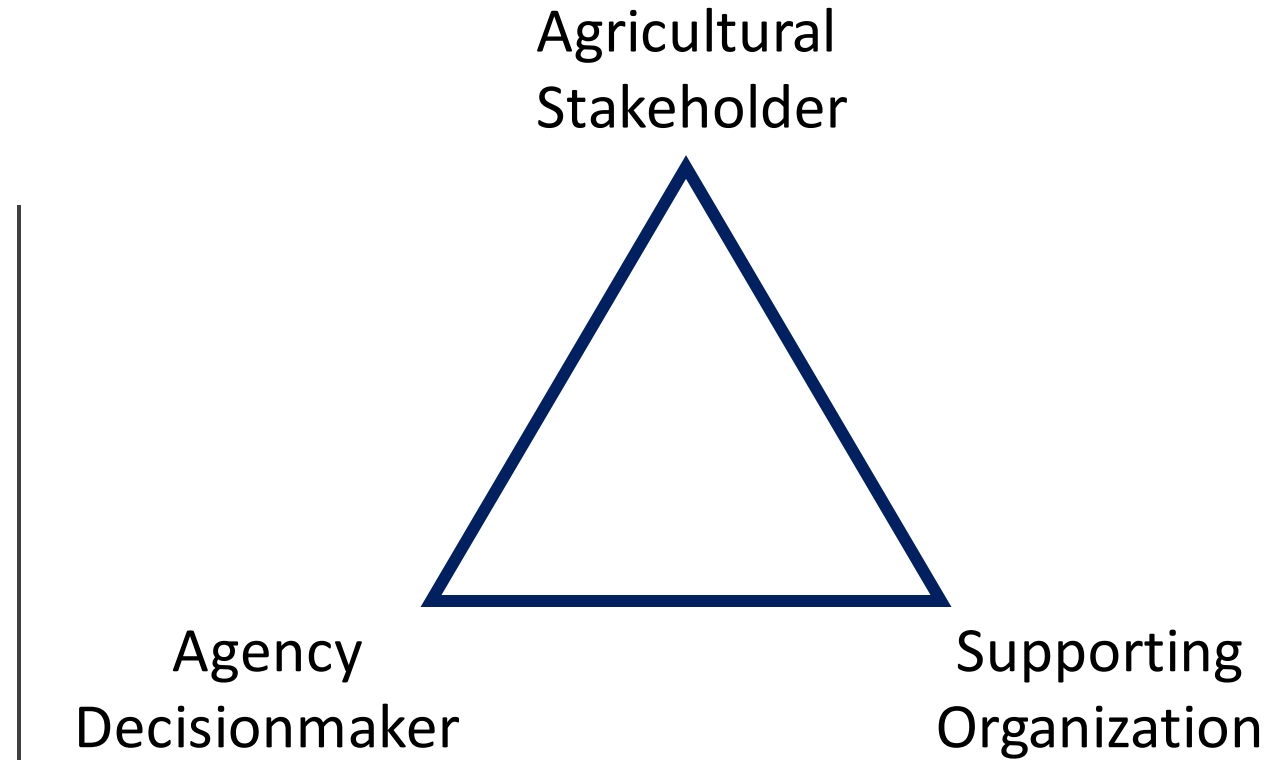
# Policy Phase

March – September 2022



Policy  
Initiatives:

Working  
Group  
Structure





# Policy Analysis

Leveraging Projects, Programs,  
and Policies

San Diego State University

Dr. Sherry Ryan

School of Public Affairs



**RESOURCE  
CONSERVATION  
DISTRICT**  
Greater San Diego County



**SAN DIEGO STATE  
UNIVERSITY**

# Overview of Task 3

- Task 3A
  - Technical Panel convened and identified **Land Access, Water Availability, and Workforce Development** as three areas of policy priority
- Task 3B
  - Inventory relevant programs, projects and policies related to identified priorities
  - Identify gaps or needs in programs, projects, and policies related to priorities
- Task 3C
  - Create policy leverage plan framework to summarize areas of influence within policy realm

# Task 3B Approach

• 3B.1 Inventory of previously funded SALC plans

---



• 3B.2 Identified all cities in SD County with agricultural lands using Map 1.2 Current Cultivated Extent

---



• 3B.3 Inventory policies and programs in cities with agricultural lands

---

*In progress*

• 3B.4 Synthesize findings for review by County and technical panel

---

# 3B.3 Inventory of Policies

- Internet Searches to ID Plans/Programs
  - General Plan
  - Climate Action Plans
  - Other agricultural-related policies and programs
- Review of Plans/Programs
  - [Google sheet tracking citations](#)



# Outreach Phase

# Producer Needs Assessment

---

Winter 2021

CREATION

---

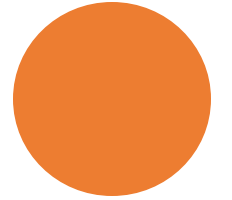
January 2022

DISTRIBUTION

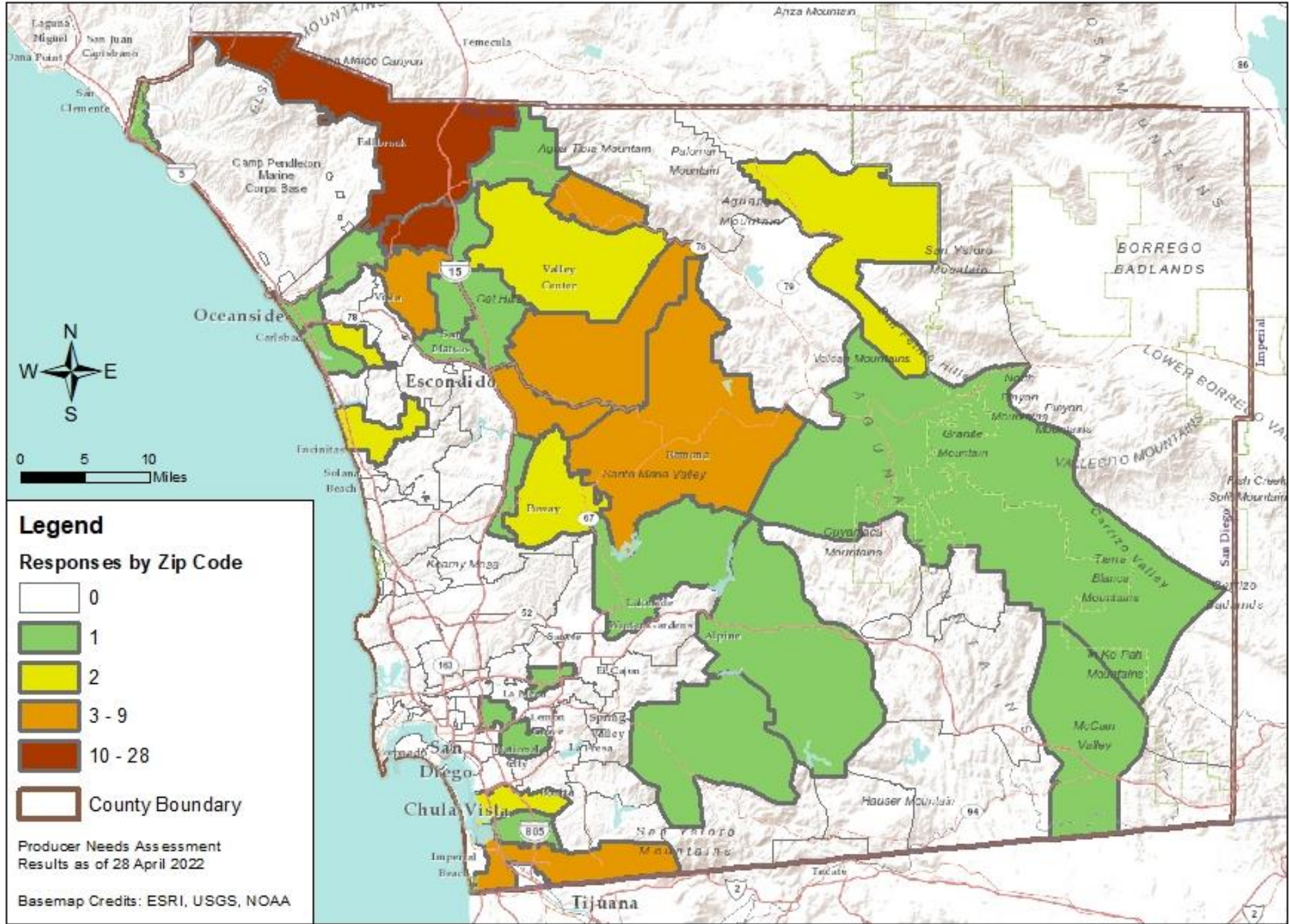
---

May 2022

CLOSED

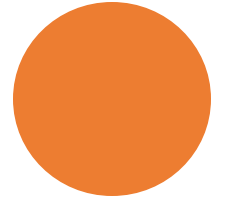






# Taking Qualitative Data into Consideration

- Farm Size
- Years in Ag
- Demographics





# Listening Sessions

Feb 22nd from 11am – 1pm

- Lindo Lake Park, Lakeside
- 16 Producers

May 2nd from 9am – 11am

- SD Farm Bureau, Escondido
- 11 Producers

# Primary Production and Profitability Concerns

- Extreme Weather
- Water Availability
- Market Prices
- Input Costs
- Streamlining Regulations and Programs
- Labor Availability and Quality
- Land Costs and Access



# Water Availability Program Highlights

**Stephanie Roman**, City of Escondido – MFRO & Recycled Water

**Darcy Cook**, Mission RCD – Agricultural Irrigation Efficiency Program

**Eleonore Walker**, Environmental Incentives – County Waterscape Rebate

**Joel Kramer**, RCD of Greater San Diego County – Water Supply Overview





# City of Escondido MFRO Facility for Agriculture

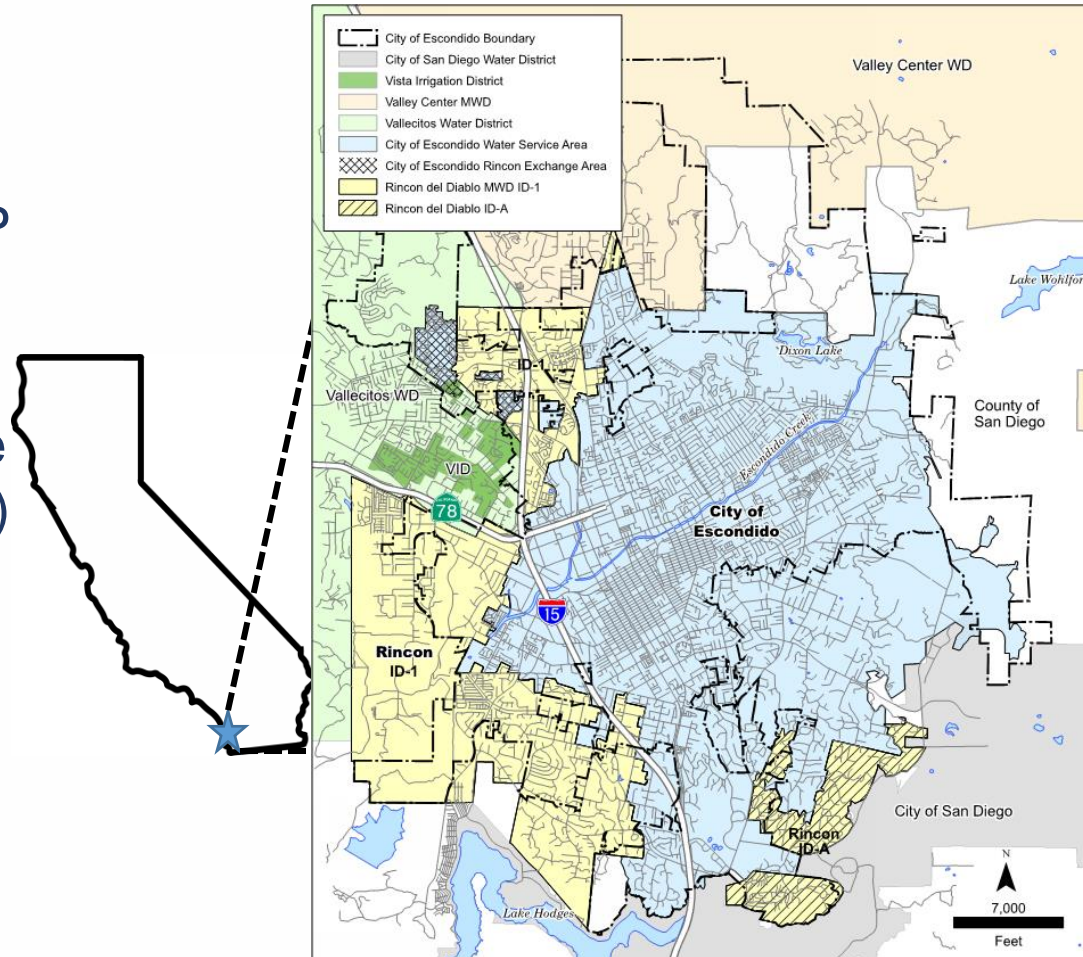
Stephanie Roman, P.E.

Principal Engineer | Utilities Construction and Engineering

City of Escondido

# City of Escondido: Public Utilities

- Water: ~26,000 customers from Escondido-Vista WTP
- Wastewater: serves ~142,000 people through the Hale Avenue Resource Recovery Facility (HARRF)
- Recycled water: HARRF designed to produce up to 9 mgd of Title 22 recycled water



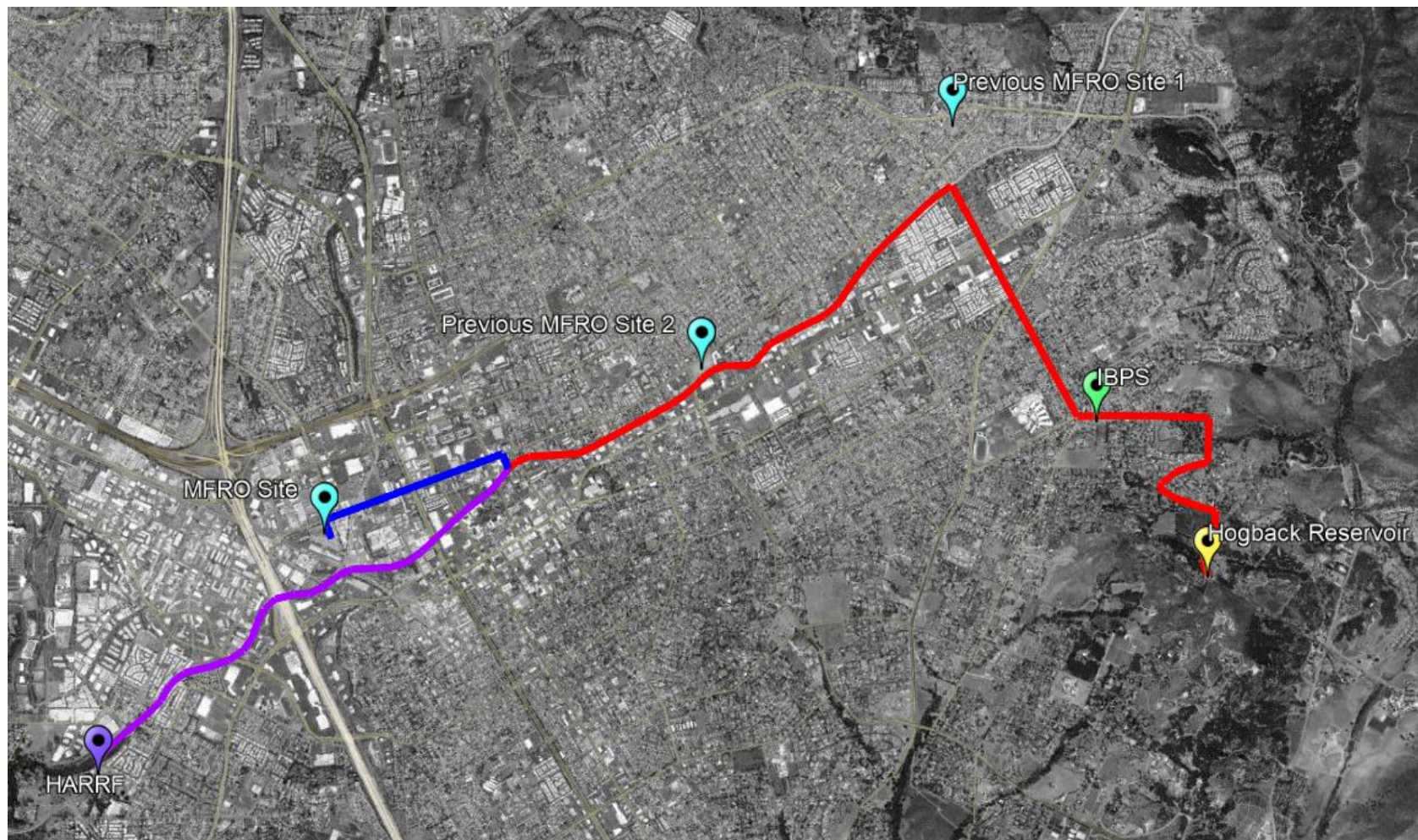
# Agriculture User Agreements

- Signed agreements with agricultural users
- Reduced chloride for avocados and other sensitive crops
- Contracted water rate structure
- Drought tolerant water supply
  - backup raw water and potable water connections

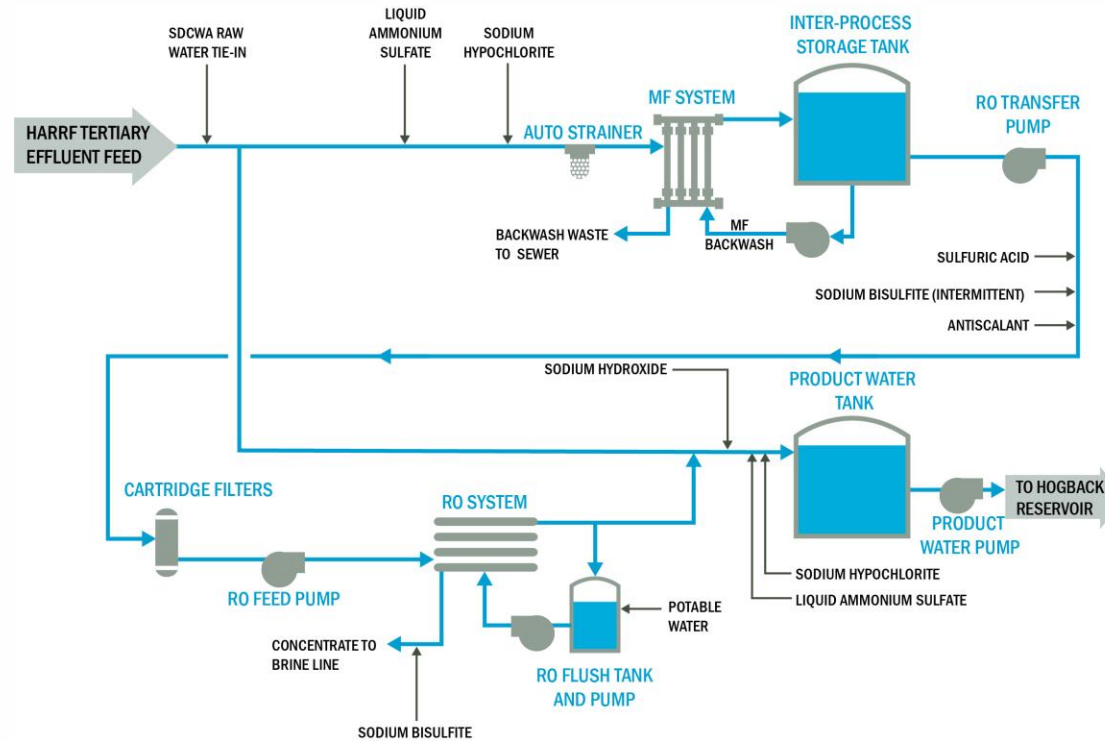




# Project Geography



# MFRO Facility





Questions?

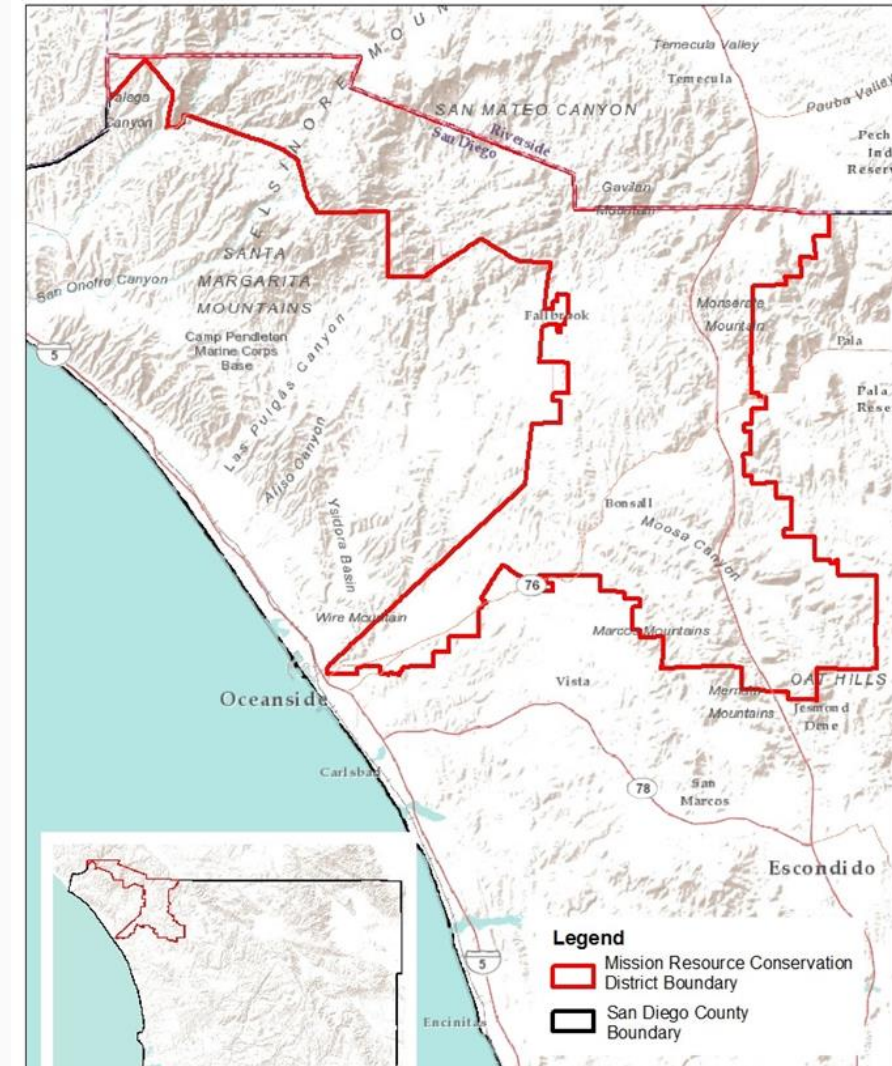


Darcy Cook, District Manager

Mission: to promote the conservation of soil, water and other natural resources in the San Luis Rey and Santa Margarita watersheds through effective planning to ensure a healthy ecosystem and provide economic benefits and quality of life for landowners and the general public.

# Mission RCD, Fallbrook

- Established in 1947 as the Middle San Luis Rey Soil Conservation District.
- We engage with its community in northern San Diego county as a unique non-regulatory, “boots on the ground” technical assistance provider.
- We work with landowners, residents, municipal govts, public agencies, non-profits, and state and local organizations with educational and training programs.
- We collaborate with TEAM RCD in Riverside County, and with Greater San Diego RCD and Upper San Luis Rey RCD



# MRCDD Agriculture Water Conservation

MRCDD has worked with the San Diego County Water Authority since the 1990's, providing technical assistance to local growers for water conservation efforts on agricultural properties.

## IRRIGATION SYSTEM EVALUATIONS

Free evaluation and report with findings and recommendations

## AG IRRIGATION EFFICIENCY PROGRAM (AIEP)

Rebates up to \$550 per acre or \$5,000 per property for irrigation upgrades

## SOIL MOISTURE SENSOR SYSTEM COST-SHARE

Rebates up to \$5,000 per property for soil moisture sensor systems

# MRCDD Agriculture Water Conservation

We partner with TEAM RCD and Rancho Ca Water District in Riverside County providing technical assistance for AIEP and crop conversion projects to replace existing high-water use crops with those with lower irrigation water demands.

## Ag IRRIGATION EFFICIENCY PROGRAM (AIEP)

Rebates up to 50% of cost for approved irrigation retrofit

## CropSWAP

Crop conversion on ag properties at least 2 acres in size and save at least 1 acre foot of water per acre, per year.

Conversion projects include wine grapes, citrus, olives and cut flowers

# MRCDD Agriculture Water Conservation

Other ag water TA includes:

Irrigation water management and conservation practices for the Natural Resources Conservation Service (NRCS) Regional Conservation Partnership Program

Connecting growers to a network of agency resources including CDFA, University of California Cooperative Extension (UCCE), University of California Agriculture and Natural Resources (UCANR), and NRCS.





Questions?

Thank you!



Darcy Cook, District Manager

130 E. Alvarado Street  
Fallbrook, California 92028  
(760) 728-1332

[darcy@missionrcd.org](mailto:darcy@missionrcd.org)





**TURF REPLACEMENT**



Starting at \$3 per sq. ft

**WATERSMART  
EDGESCAPING**



\$4-6 per sq. ft

**LANDSCAPE OPTIMIZATION  
SERVICE**



Starting at \$3 per sq. ft +  
50% of landscape design

**SMART-IRRIGATION  
CONTROLLERS**



Up to \$80/controller or  
\$60/station

**RAIN-FRIENDLY  
PAVEMENT**



Up to \$15 per sq. ft

**SEPTIC TANK PUMPING**



\$100 per service

**RAIN-SAVING  
CONTAINERS**



Up to \$450/cistern, \$65/barrel,  
or \$0.75/gallon stored

**RAIN-SAVING  
FEATURES**



Up to \$2.25/gallon stored

**AGRICULTURAL IRRIGATION  
EFFICIENCY PROGRAM**



Up to \$550 per acre or  
\$5,000 per property

# MAXIMIZE YOUR YARD. MINIMIZE YOUR BILLS.

**CHECK YOUR ELIGIBILITY AND ESTIMATE YOUR REBATE AT  
[SANDIEGOCOUNTY.GOV/WATERSHEDREBATES](https://sandiegocounty.gov/watershedrebates)**

**For properties in unincorporated San Diego County only.**

# Overview of Regional Water Supply

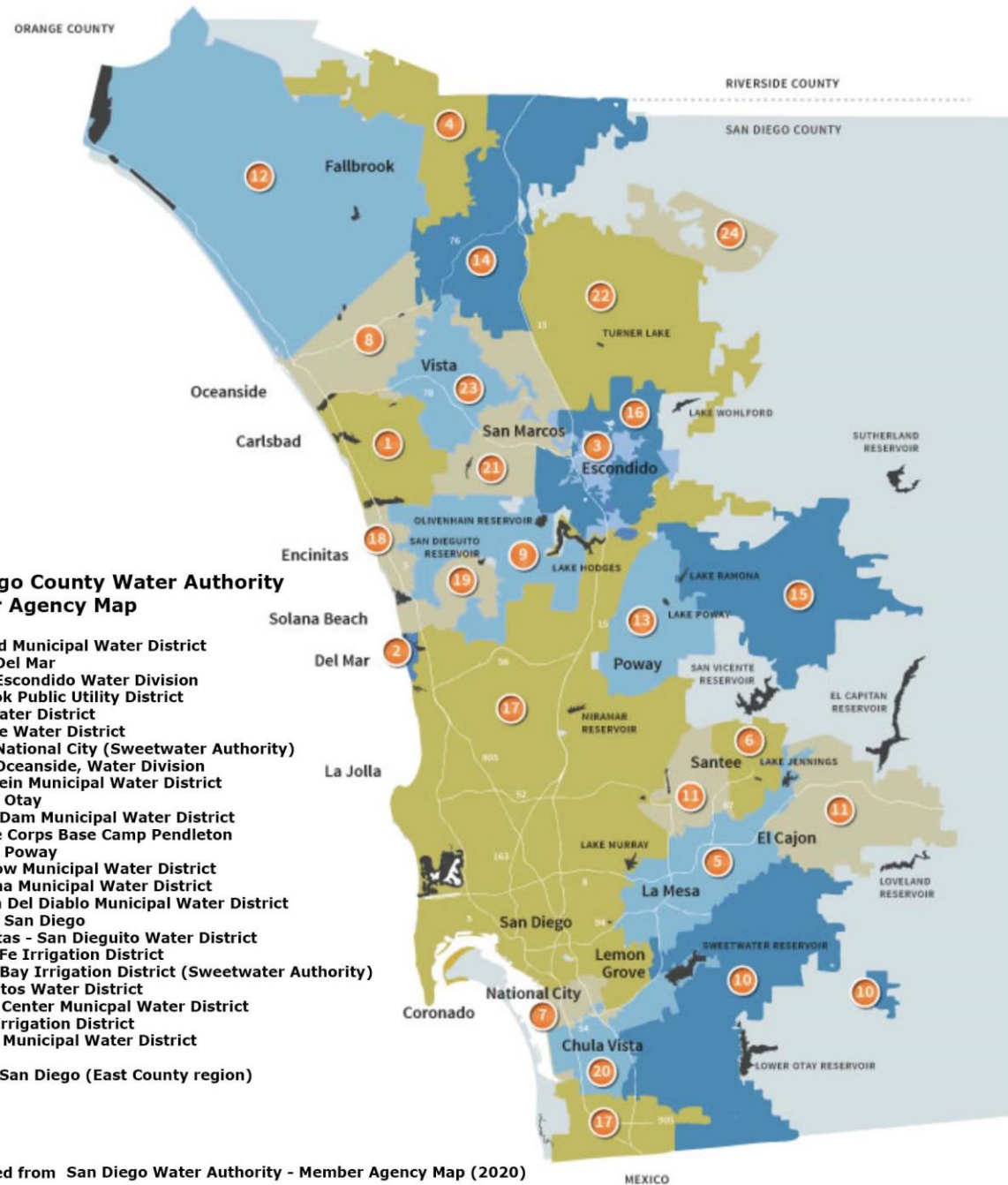


# Member Agencies: San Diego County Water Authority

## San Diego County Water Authority Member Agency Map

1. Carlsbad Municipal Water District
2. City of Del Mar
3. City of Escondido Water Division
4. Fallbrook Public Utility District
5. Helix Water District
6. Lakeside Water District
7. City of National City (Sweetwater Authority)
8. City of Oceanside, Water Division
9. Olivenhein Municipal Water District
10. City of Otay
11. Padre Dam Municipal Water District
12. Marine Corps Base Camp Pendleton
13. City of Poway
14. Rainbow Municipal Water District
15. Ramona Municipal Water District
16. Rincon Del Diablo Municipal Water District
17. City of San Diego
18. Encinitas - San Dieguito Water District
19. Santa Fe Irrigation District
20. South Bay Irrigation District (Sweetwater Authority)
21. Vallecitos Water District
22. Valley Center Municipal Water District
23. Vista Irrigation District
24. Yuima Municipal Water District

County of San Diego (East County region)



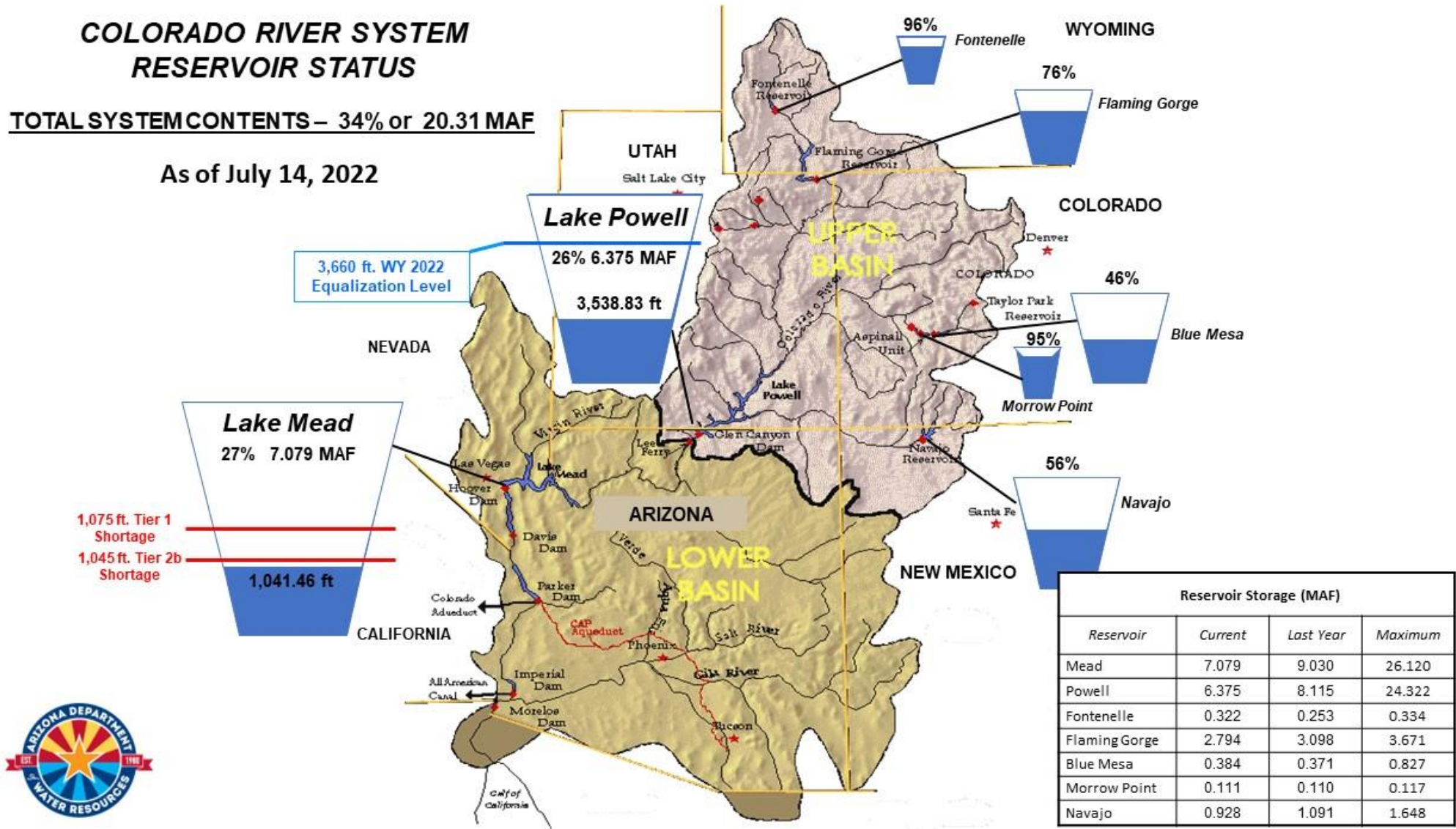
Map modified from San Diego Water Authority - Member Agency Map (2020)

# Reservoir Status: Colorado River

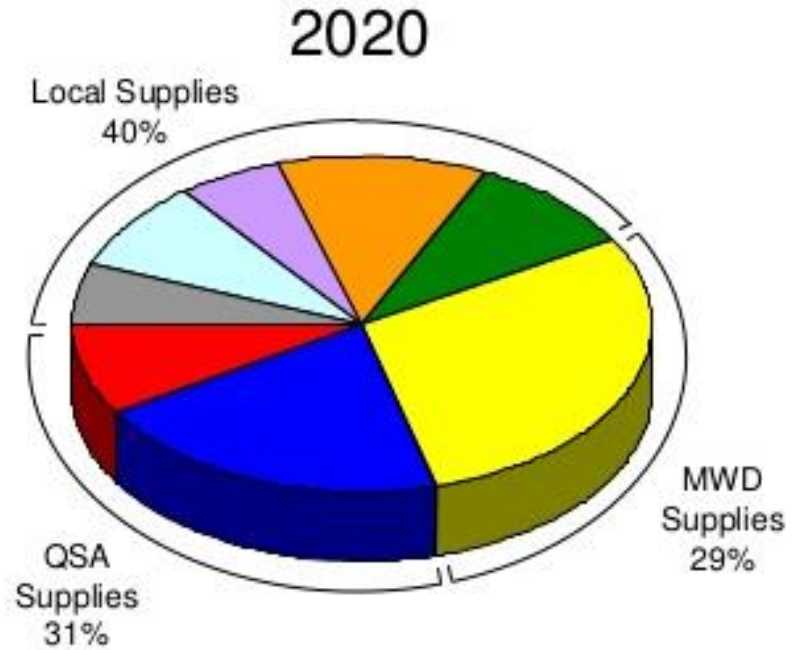
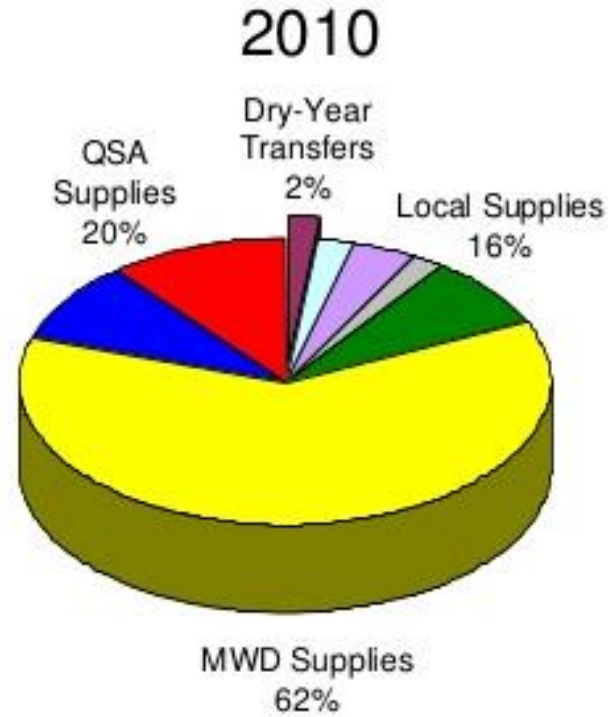
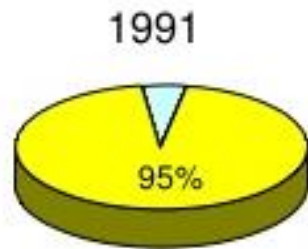
## COLORADO RIVER SYSTEM RESERVOIR STATUS

**TOTAL SYSTEM CONTENTS – 34% or 20.31 MAF**

As of July 14, 2022



# Diversifying Regional Supply

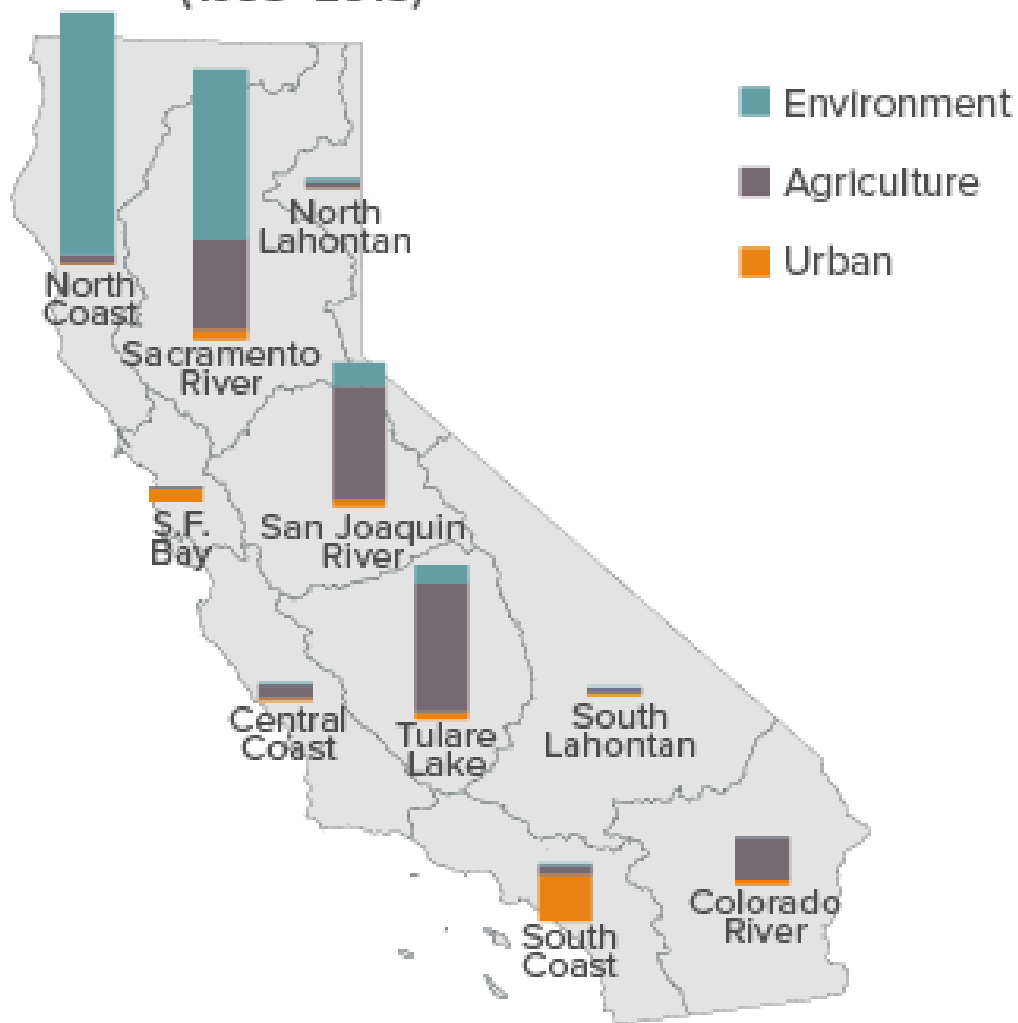


- Metropolitan Water District
- Imperial Irrigation District Transfer
- All American & Coachella Canal Lining
- Conservation

- Seawater Desalination
- Local Surface Water
- Recycled Water
- Groundwater
- Dry-Year Water Transfers

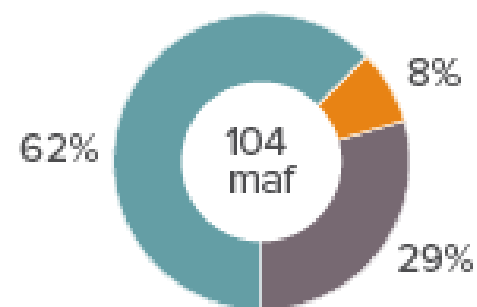
# Regional Water Use by Sector

Average annual applied water use  
(1998–2015)

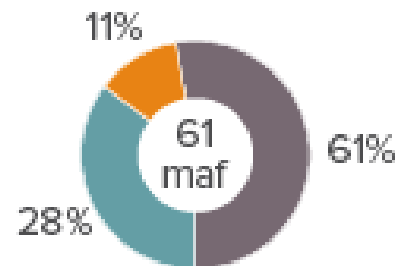


Statewide applied water use,  
millions of acre-feet (maf)

Wet year (2006)



Dry year (2014)



# Agricultural Water Rate

Adjusted Rates	2021	2022
CWA Melded M&I Treated Rate	\$1,235	\$1,319
CWA Melded M&I Untreated Rate	\$940	\$1,009
Special Agricultural Supply Rate (MWD Tier 1)	\$777	\$799
CWA Credit for Agricultural Water (\$/AF)	\$163/AF	\$210/AF



## Irrigation Technical Assistance



## Agricultural Efficiency Incentives



## Recycled Water for Agricultural Use



Example Initiatives

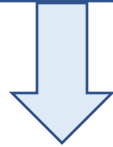
# Suggested Policy Initiatives

COST



- Tiered Rate

EFFICIENCY



- Irrigation Efficiency  
Technical Support

INCENTIVES



- Expanding local  
efficiency incentives

SUPPLY



- Recycled Water  
Facilities dedicated  
to agriculture