



San Diego Agricultural Planning Program

Policy Focus

Workforce Development



Introduction

Sustainable Agricultural Lands Conservation (SALC) Program

- Component of the California Strategic Growth Council's Affordable Housing and Sustainable Communities Program

Funded by California Climate Investments

- Cap-and-trade auction proceeds for projects that reduce greenhouse gas emissions

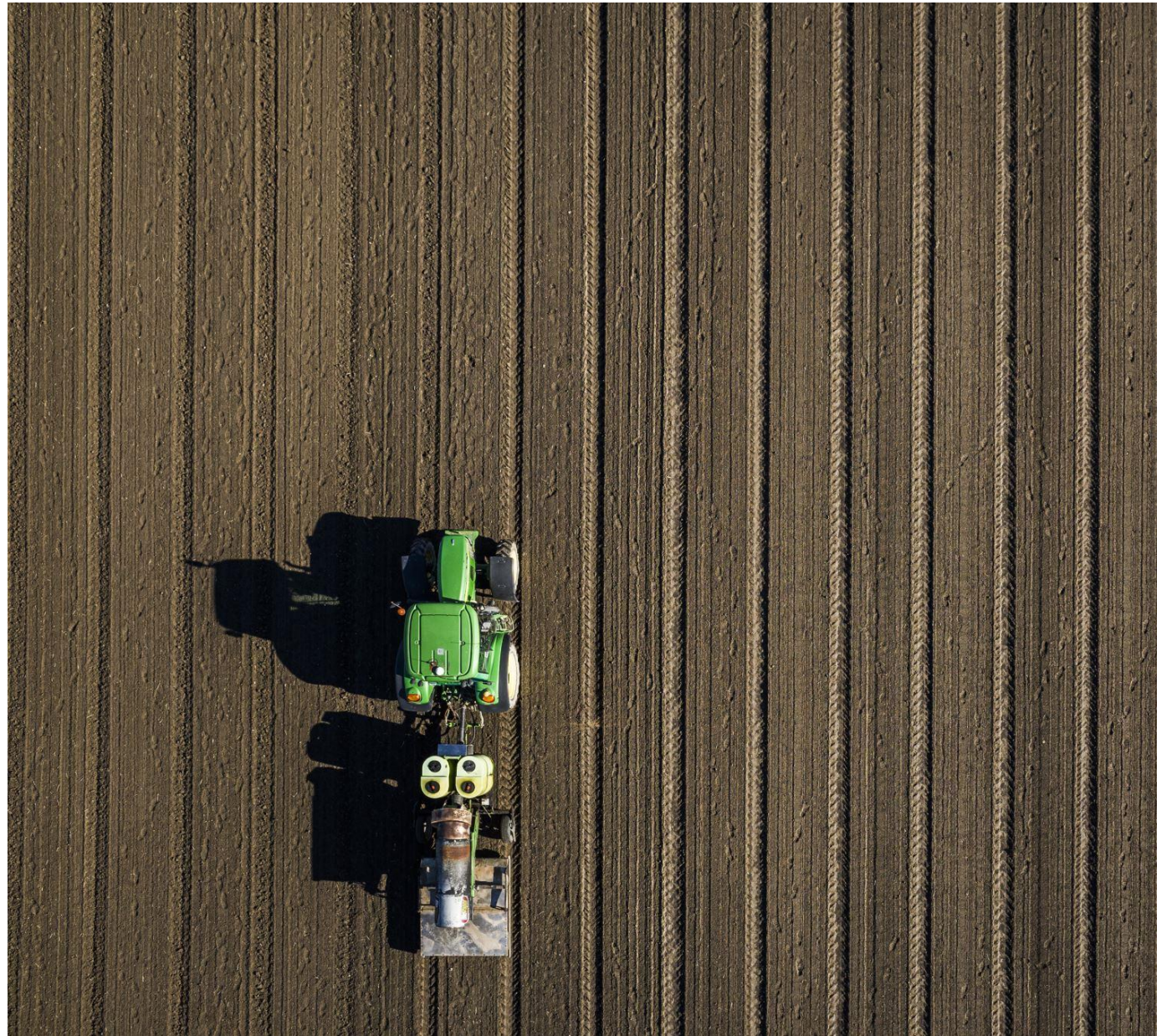


Introduction

Sustainable Agricultural Lands Conservation (SALC) Program

- Principal Goals
 - Protect at-risk agricultural lands
 - Avoiding increases in greenhouse gas emissions


Designated for funding either agricultural conservation acquisitions or agricultural conservation planning projects



San Diego Agricultural Planning Program

- San Diego County LAFCO as Lead Applicant
- The RCD of Greater San Diego County as Project Manager
- Awarded \$250,000 Ag Conservation Planning Grant
- June 2021 – June 2023





San Diego Agricultural Planning Program

Key Partnerships:

- Mission RCD
- SDSU
- Foodshed
- Community Health Improvement Partners (CHIP)
- Dudek

Key Tasks:

- Grant Management
- Mapping and GHG Analysis
- **Leveraging Programs, Projects, and Policies**
- Community Outreach
- Final Strategic Vision Plan

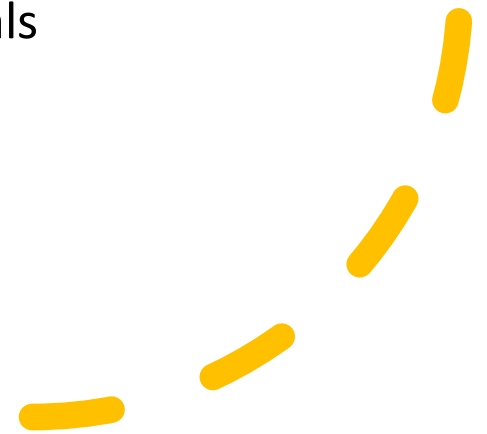
Agenda

9:00 – 9:15 | Partner Introductions
- Establish Community Agreements -

9:15 – 9:30 | Outreach Phase Results

9:30 – 10:00 | Existing Program Summaries

10:00 – 12:00 | Discussion of Project Proposals





Policy Phase

Is there an existing program addressing this need?

Can our core partners begin to address this need in the next year?

Priority Policy Topics

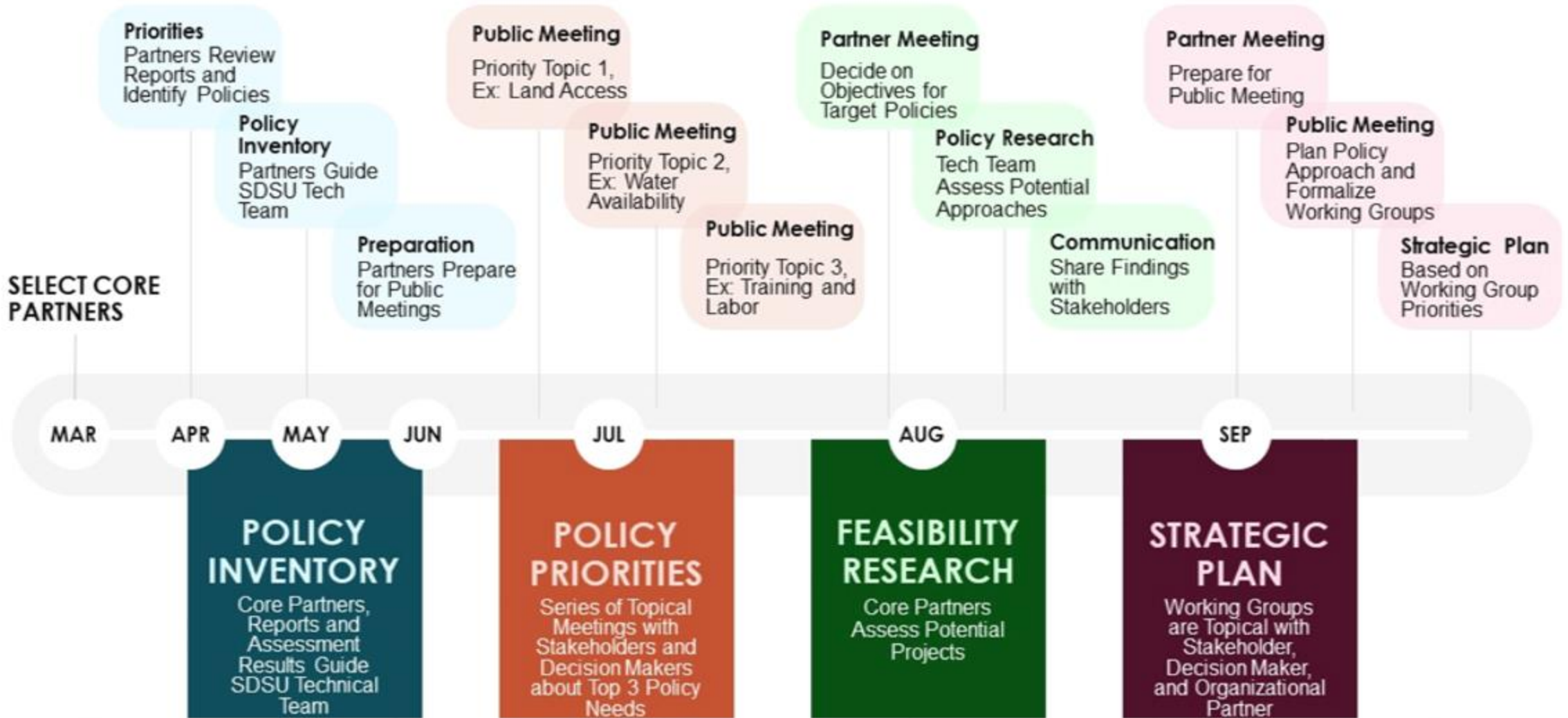
- Water Availability
- Labor Availability and Quality
- Land Costs and Access



San Diego
Agricultural
Planning
Program

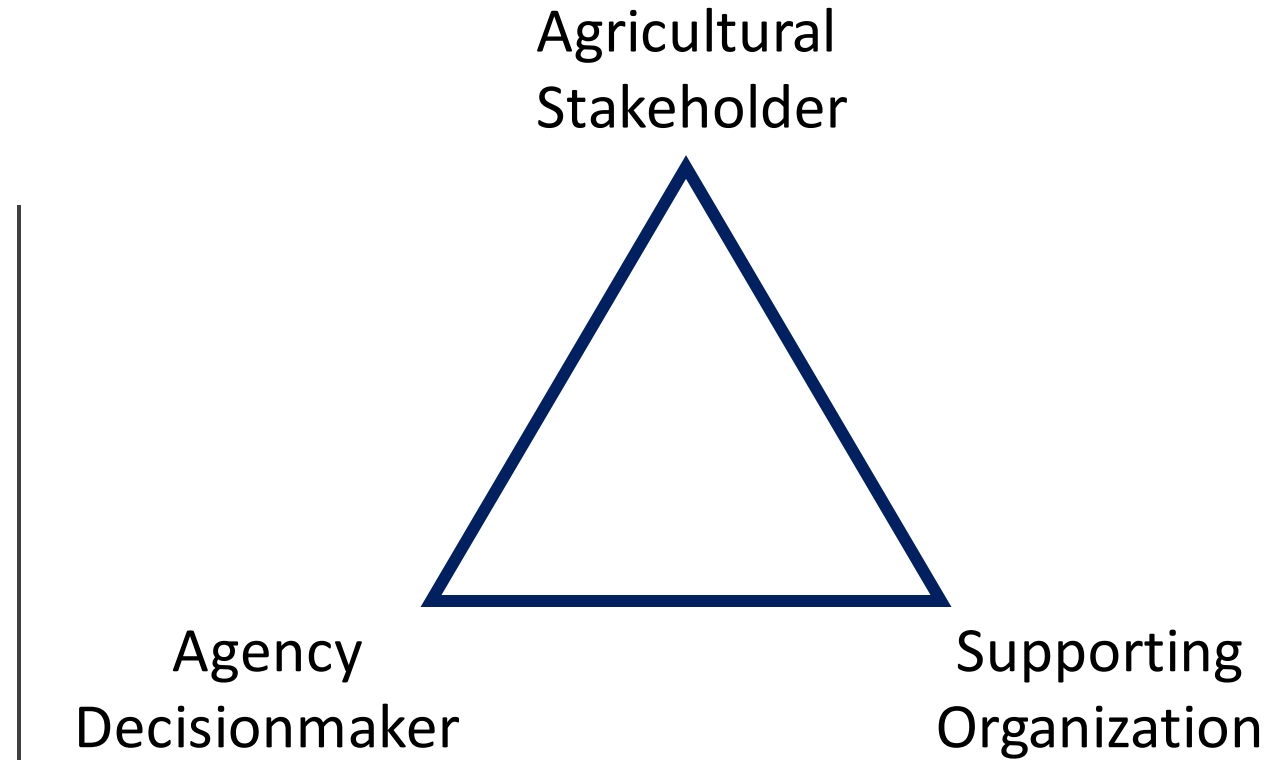
Policy Phase

March – September 2022



Policy
Initiatives:

Working
Group
Structure





Mapping Phase

Leveraging Projects, Programs,
and Policies

San Diego State University

Sherry Ryan, PhD

School of Public Affairs



**RESOURCE
CONSERVATION
DISTRICT**
Greater San Diego County



**SAN DIEGO STATE
UNIVERSITY**

Overview of Task 3

- Task 3A
 - Technical Panel convened and identified **Land Access, Water Availability, and Workforce Development** as three areas of policy priority
- Task 3B
 - Inventory relevant programs, projects and policies related to identified priorities
 - Identify gaps or needs in programs, projects, and policies related to priorities
- Task 3C
 - Create policy leverage plan framework to summarize areas of influence within policy realm



Task 3B Approach

- 3B.1 Inventory of previously funded SALC plans
-



- 3B.2 Identified all cities in SD County with agricultural lands using Map 1.2 Current Cultivated Extent
-



- 3B.3 Inventory policies and programs in cities with agricultural lands
-

In progress

- 3B.4 Synthesize findings for review by County and technical panel
-

3B.3 Inventory of Policies

- Internet Searches to ID Plans/Programs
 - General Plan
 - Climate Action Plans
 - Other agricultural-related policies and programs
- Review of Plans/Programs
 - [Google sheet tracking citations](#)



Outreach Phase

Producer Needs Assessment

Winter 2021

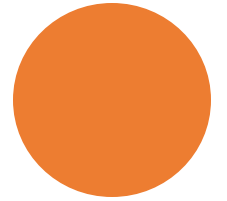
CREATION

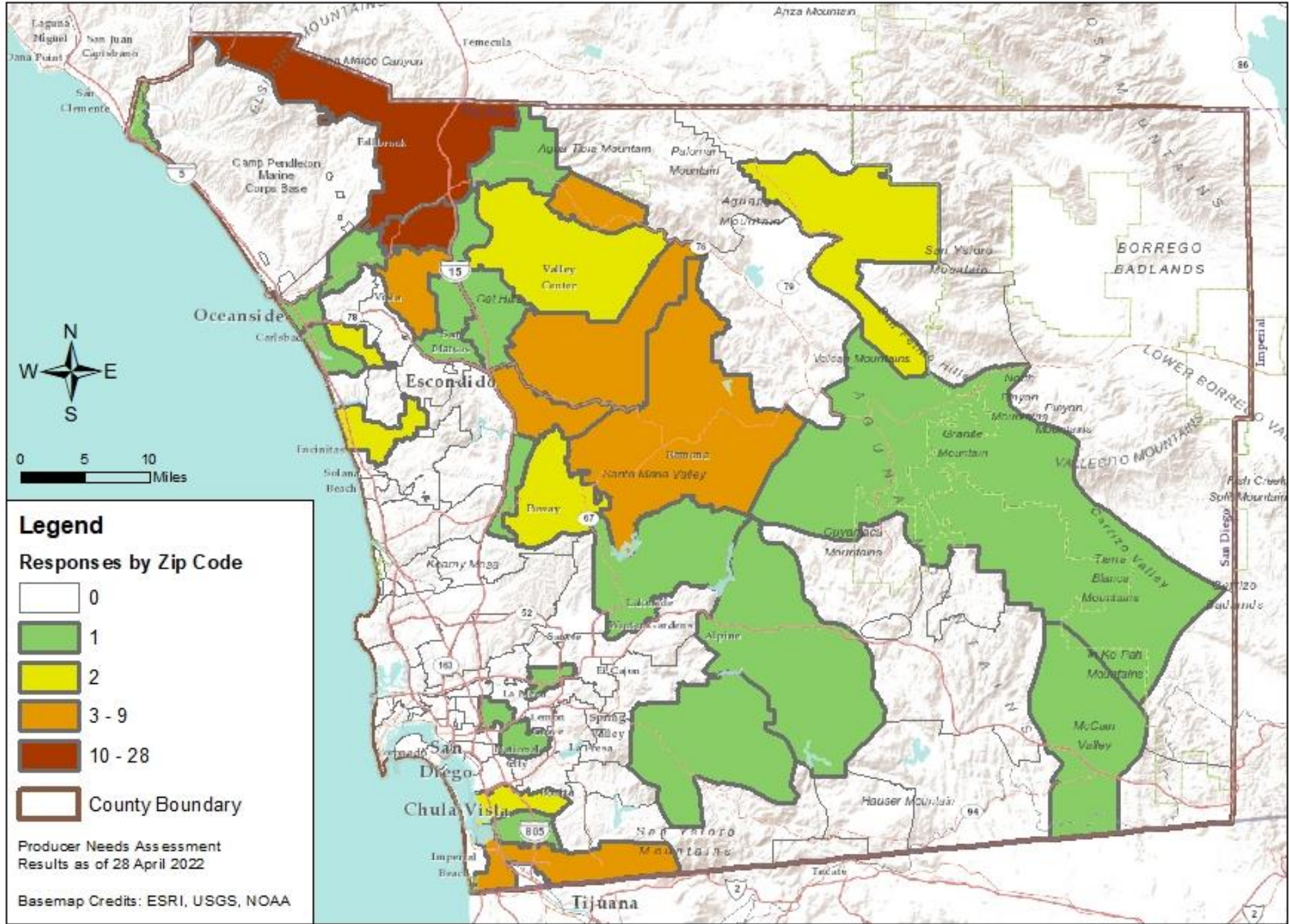
January 2022

DISTRIBUTION

May 2022

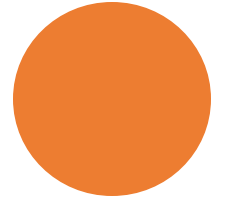
CLOSED





Taking Qualitative Data into Consideration

- Farm Size
- Years in Ag
- Demographics





Listening Sessions

Feb 22nd from 11am – 1pm

- Lindo Lake Park, Lakeside
- 16 Producers

May 2nd from 9am – 11am

- SD Farm Bureau, Escondido
- 11 Producers

Primary Production and Profitability Concerns

- Extreme Weather – Production
- Water Availability – Production and Profitability
- Market Prices
- Input Costs
- Streamlining Regulations and Programs
- Labor Availability and Quality
- Land Costs and Access

Land Access Program Highlights

- Hernan Cavazos, Solidarity Farm, Trainings and Incubator Plots
- Erin McConnell, San Diego City College, Sustainable Ag Dept
- CA Dept of Food & Agriculture, Beginning Farmer & Farmworker Grant Training Program





FOODSHED



SAN DIEGO CITY COLLEGE



Seeds@City
Urban Farm
&
The Sustainable
Agriculture
Program



Seeds@City Urban Farm

- *First site created in 2008*
- Now covering an ~1 acre of City College Campus spread out in multiple sites:
 - 3 growing areas
 - Two greenhouses
- Organic-preferred fruit and vegetable production farm – produce is sold to the campus community
- Serves as the outdoor laboratory for classes in the Sustainable Agriculture Program
- Provides service learning opportunity for all City College students



Sustainable Agriculture Program

*Both an academic and career
technical education program
offering:*

- Associate of Science in
Agriculture Plant Science
Degree for Transfer
- Associate of Science in
Sustainable Urban Agriculture
- Certificate of performance:
 - Organic Gardening for the
Culinary Arts (7 units)
- Certificate of achievement:
 - Urban gardening (12 units)
 - Urban farming professional (30
units)



Program courses

1. AGRI 100: Principles of sustainable agriculture
2. AGRI 102: Sustainable urban agriculture practices
3. AGRI 104: Sustainable vegetable production
4. AGRI 107: Introduction to agricultural plant science
5. AGRI 110: Introduction to fruit tree management
6. AGRI 114: Plant propagation
7. AGRI 116: Drip Irrigation basics
8. AGRI 125: Introduction to soil science
9. AGRI 128: Food preservation
10. AGRI 270: Work experience in sustainable urban agriculture



Questions?

SAN DIEGO
CITY COLLEGE



WELCOME

CDEFA

**2022 Beginning Farmer and Farmworker Training and
Workforce Development (BFFTP) Grant Program**





About the Program

- Funding for this grant program was made possible through the 2021 California general fund budget. 10 Million total funding FY21-FY23
- Purpose: To support organizations in the development, enhancement and/or expansion of beginning farmer apprenticeship programs and farmworker training and workforce development programs.
- WORKFORCE DEVELOPMENT- To ensure that resources are dedicated to strengthening support for socially disadvantaged beginning farmers and farmworkers who need job skills training to provide job sustainability.
- Eligible Entities: Non-profit organizations, Tribal Governments and Community colleges. Community Colleges **are eligible as co-applicants with local partner organizations.**



California Department of Food and Agriculture
Farm Equity Office

2022 Beginning Farmer and Farmworker Training and Workforce Development (BFFTP) Grant Program

[BFFTP Program Website](#)

RFA- [REA](#)

Online [application](#) via AmpliFund

Application Period OPEN until August 15, 2022





Funding Duration/ Award Types

- \$5 million in this first round, and \$5 million in the next round in 2023. (\$10 million total funding)
- Types of awards:
 - Program planning and curriculum development grants of up to \$100,000.
 - Maximum grant term: 1 year
 - Program implementation grants up to \$1,000,000 for both farmer training and farmworker training programs.
 - Maximum grant terms: 2 years



Tracks that Support Workforce Development Programs

- Track 1- Program Planning & Curriculum Development:
 - Direct support for existing or new programs to fully develop their programs serving beginning farmers *OR*
 - Farmworker training and workforce development program, establish partnerships, seek accreditation [from the California Division of Apprenticeship Standards \(if applicable\)](#), land tenure (either land lease or purchase) and design curriculum.
 - Assistance for the planning/ curriculum development phase to formalize or expand the reach of existing programs (Beginning Farmer or Workforce Development in Ag).
 - Maximum Award Amount- \$100,000
 - Aims to prepare organizations to successfully apply for larger grants and build capacity to serve a region's beginning farmers and/or farmworkers through training and workforce development for the agriculture industry.



Tracks that Support Workforce Development Programs

- Track 3- Program Implementation for Farmworker Training and Workforce Development in Agriculture
 - Job skills training, paid apprenticeships, education, and agricultural technology training for farmworkers not currently eligible for Federal Dept of Labor and and/or programs funded through Section 167 of the Workforce Investment Act (WIA) and National Farmworker Jobs Program (NFJP). Organizations currently receiving funding through these programs are eligible to apply for the BFFTP program and will need to demonstrate how BFFTP funding will expand currently programming to focus on agricultural careers and those not currently served through Federal programs.
 - Farmworker workforce development programs with curriculum and instruction tailored towards serving the unique cultural and language needs in the farmworker agricultural sector and providing advanced skills training needed to advance to a higher skilled job in the ag sector. Examples of trainings might include new ag technology, ag centered certification programs, training in IPM or organic management practices, irrigation systems or industry-specific skills training such as vineyard management.
 - There will be a geographic preference and priority for projects these regions: (Central Valley, Coachella Valley, Imperial Valley, Central Coast, Southern California), A secondary priority of this track is programs that target job upskilling for agricultural workers who have lost jobs due to climate change, drought, or other natural disasters.



Program Updates/ Resources

CDFA BFFTP Landing Page (English)

Website	CDFA - Beginning Farmer & Farmworker Training Grant Program (ca.gov)
---------	--

CDFA BFFTP (Español)

Website	CDFA - Programa de Fondos Económicos BFFTP (ca.gov)
---------	---

Grant Programs at CDFA

Website	CDFA - Grant Programs (ca.gov)
Email	grants@cdfa.ca.gov

CDFA Farm Equity Office: Contact Information

Thea Rittenhouse- Farmer Equity Advisor

Thea.Rittenhouse@cdfa.ca.gov

Tel: (916) 202-9415

Carmen Carrasco- Small Farm Liaison

Carmen.Carrasco@cdfa.ca.gov

Tel: (909) 219-2991



Suggested Policy Initiatives

TRAINING



- Expanding vocational training in East County
- Providing business support services to incubator farms

EQUIPMENT



- Developing equipment hubs to share resources

COST OF ENTRY



- Streamlining approval of farmworker housing
- Reserving additional land for incubator plots