

ENHANCING RESTORATION



AND Connections within Otay Valley Regional Park



PROJECT SUMMARY

Otay Valley Regional Park (OVRP) is a vital natural asset in our South Bay region, serving both wildlife and the community. Numerous environmental and social forces challenge its capacity to provide a healthy place for native wildlife and adequate access for park users. Funded by California's Wildlife Conservation Board, this project will produce a shovel-ready plan to restore and connect a 15-acre piece of parkland currently dominated by non-native eucalyptus. The site re-design plan will conserve native wildlife, enhance biodiversity, improve water quality, and make the site more accessible to the community. See photos of the existing site here: [Outreach Photos](#)

CONTACT US

JOEL KRAMER:
JOEL.KRAMER@RCDSANDIEGO.ORG
(619) 562-0096 X103

LAURIE BROEDLING
LBROEDLING@OUTLOOK.COM
(619) 307-1760

WEBSITE:
WWW.RCDSANDIEGO.ORG/OTAY-CONNECTIONS

PROJECT GOALS

RESTORE HABITAT



Support local wildlife, especially native and at risk species; reduce pollution, erosion, and fire risk.

INCREASE PUBLIC ACCESS



Enable community interaction with native eco-systems.

ENHANCE CONNECTIVITY FOR NATIVE WILDLIFE:



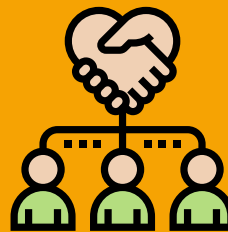
Facilitate wildlife movement within and adjacent to OVRP.

IMPROVE WATER QUALITY AND AVAILABILITY:



Use nature-based solutions to the extent feasible for reducing storm water runoff and erosion and improving infiltration.

CREATE COMMUNITY ENGAGEMENT AND STEWARDSHIP:



Involve local communities, including grassroots groups and tribal entities, in the planning process.

STATUS AND OPPORTUNITIES FOR COMMUNITY INPUT:

We are currently assessing the site, developing preliminary options for landscape design, and compiling information about relevant regulations and constraints. Because community input is crucial, we will be conducting consultations during June-July 2024. Stay updated with our quarterly reports by scanning the QR Code :



ENHANCING RESTORATION



AND

Connections within Otay Valley Regional Park



Project Partners

- Resource Conservation District (RCD) Greater San Diego County www.rcdsandiego.org- The project's lead organization, providing project management.
- City of San Diego; City of Chula Vista; County of San Diego. City of San Diego as lead landowner/jurisdiction, also working through OVRP's Joint Exercise of Powers Authority (JEPA) governance structure comprised of these three jurisdictions.
- San Diego Green Infrastructure Consortium www.greeninfrastructureconsortium.org. Applying its state-of-the-art expertise to introduce as many nature-based solutions as possible and create synergies through a coalition of partners.
- Institute for Public Strategies (IPS) <https://publicstrategies.org/>. Using its expertise in upstream prevention of health problems and its network of grassroots organizations in South Bay.
- San Diego Regional Policy and Innovation Center (PIC) <https://www.sdrpic.org/>. It is applying its expertise and broad network of local jurisdictions to this multi-jurisdictional area.
- Mongol Tribe <https://www.mongoltribe.org/>. Applying restorative land management practices to habitat restoration.
- Lumbercycle www.lumbercycle.org. It uses its expertise as an urban forestry organization to repurpose and upcycle local urban wood.



**RESOURCE
CONSERVATION
DISTRICT**
Greater San Diego County



GREEN
INFRASTRUCTURE
CONSORTIUM



The City of
SAN DIEGO



**INSTITUTE FOR
PUBLIC
STRATEGIES**

